

HVAC PLATFORMS



HVAC platforms provide a simple proprietary system for permanent fixture of HVAC machinery and air handling systems.



Product brochure
HVAC platforms



Installation manual
HVAC platforms

Find all related products and resources on our website
kattsafe.com.au

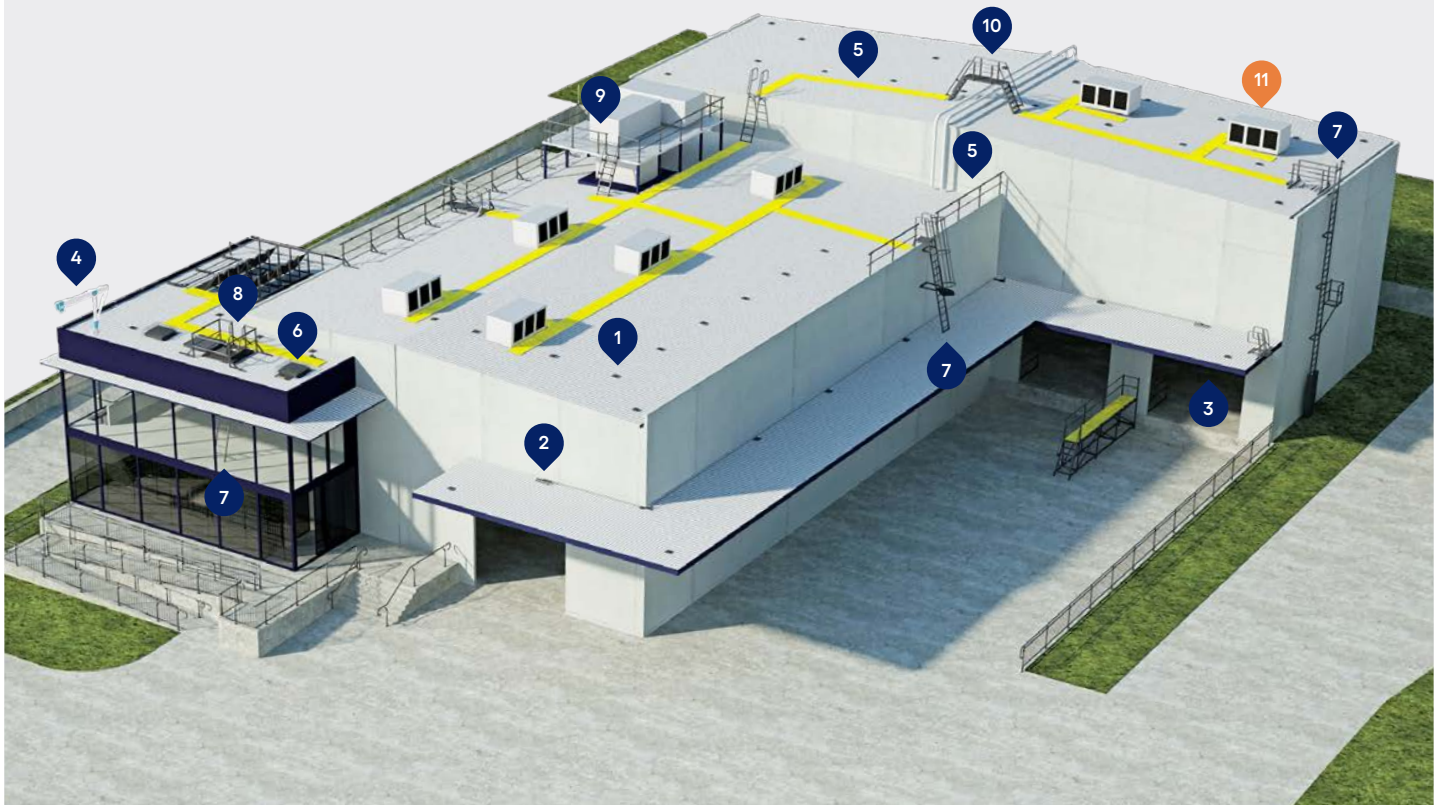
Commercial building height access and fall protection requirements

Kattsafe leads the industry in the design, installation and management of access and fall protection safety systems.

The in-action model demonstrates access and fall protection requirements for a commercial building design. Kattsafe recommendations fulfill current workplace requirements for the safety of building maintenance subcontractors, employees and the general public.

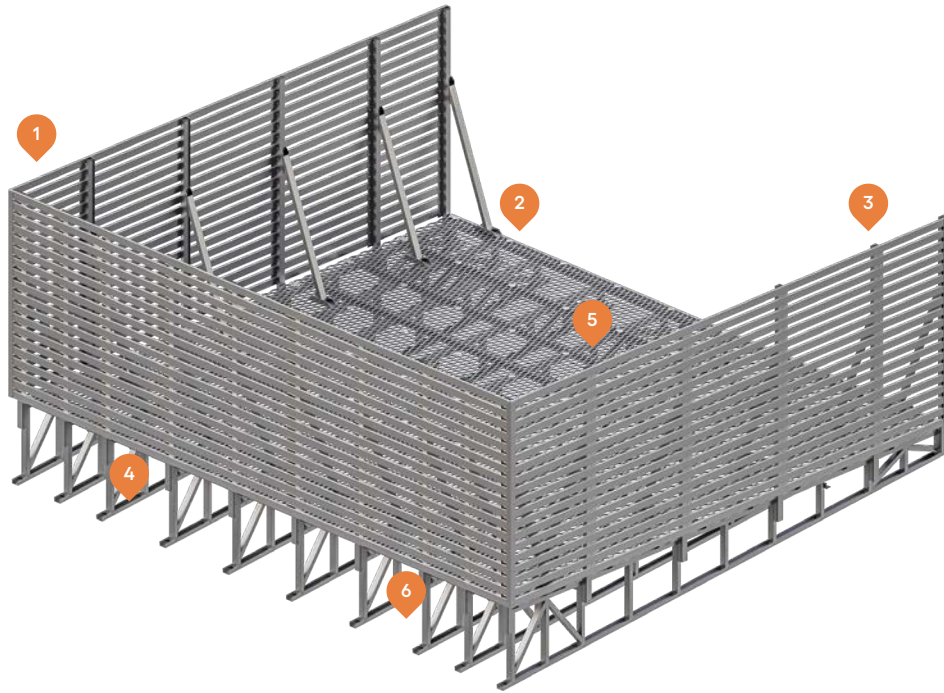
For more information please contact Kattsafe.
kattsafe.com.au

- 1 Anchor points
- 2 Static lines
- 3 Rigid rail
- 4 Davits and needles
- 5 Guardrail and walkway
- 6 Skylight protectors
- 7 Rung ladders
- 8 Access hatches
- 9 Platforms and stairs
- 10 Step ladders
- 11 HVAC platforms



HVAC PLATFORMS

HVAC platforms for metal deck roofs using a load spread system over existing purlins.



Load rating

The unique design allows up to a 5kPa rating when using load spreader profiles.



High-strength construction

The aluminium components ensure no corrosion issues, and provide a high strength support structure.



Custom screens

The screens are available in a variety of colours and have height options up to 2400mm, depending on wind category.



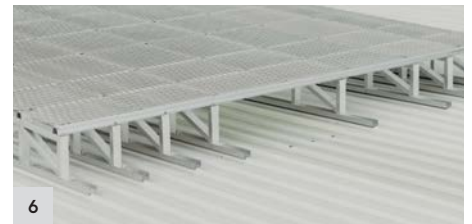
Unique truss mount design

The HVAC platform mounts to the roof crest, ensuring no water flow restriction. It also has the option to mount in the roof pan if required.



Platform deck

The aluminium expanded mesh on the platform deck provides a high strength design to withstand the loads and stresses required.



Spanning capabilities

The platform trusses can be placed up to 1000mm, to allow for skylights and roof penetrations.

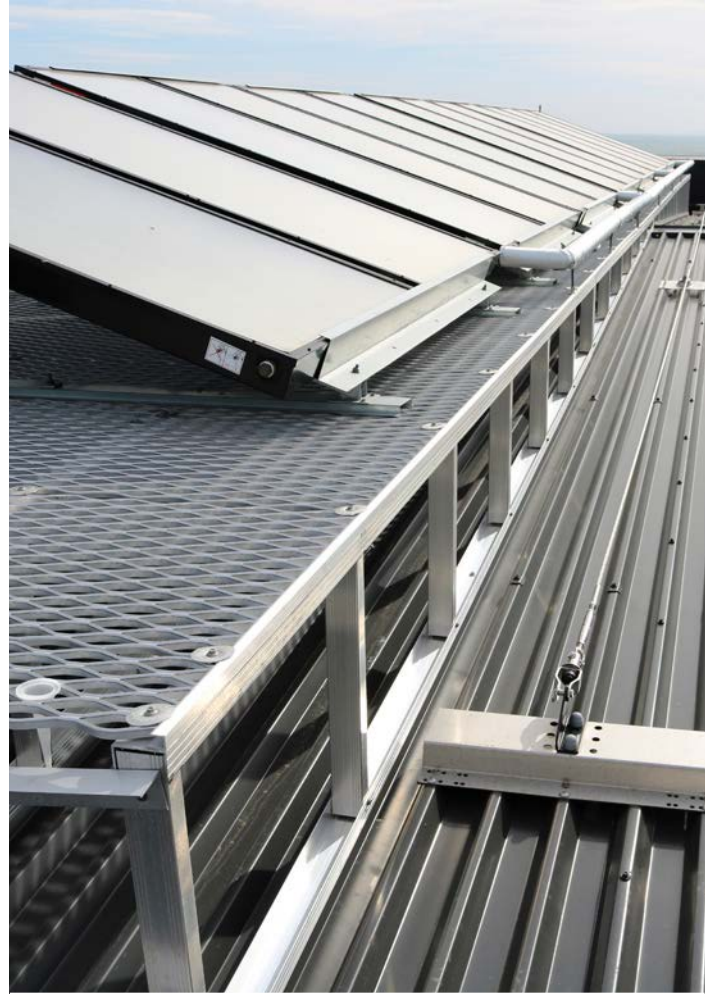
HVAC platforms are an engineered levelled system that is versatile, flexible and easy to install providing high strength solutions for refrigeration and air handling machinery.

The HVAC platform provides a simple proprietary system for permanent fixture of HVAC machinery and air handling systems. The platform is manufactured from high grade aluminium which ensures no corrosion break down when attached to a metal deck roof.

It is available in a 2.5kPa and 5.0kPa system, based on the load requirements. The platform trusses are attached to the roof crest which ensures there is no water flow restriction. The platform screens are available in varying heights and come in a number of colours.

Features and benefits of the system:

- Aluminium truss and platform components, no corrosion issues.
- Platform mounts to roof crest, no water flow restriction.
- Platform truss spacing up to 1000mm to allow for skylight and penetration spanning.
- Up to 5kPa loading ability when used with top hat load spread beam.
- 10 year warranty on supply and use of complete system.



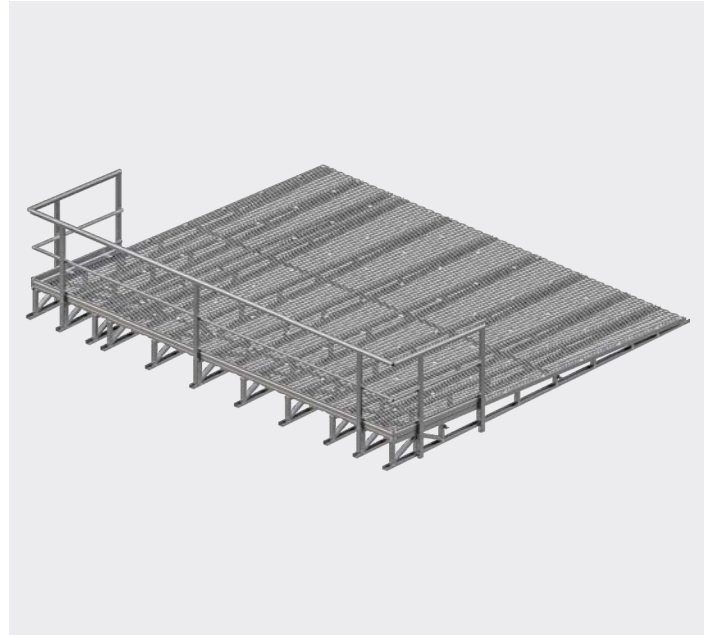
HVAC PLATFORM CONFIGURATIONS

HP25 HVAC platform - 2.5kPa

- Where the platform deck is less than 300mm above the roof deck. No guardrail is required.
- If the platform deck is 300mm plus above the roof deck. Guardrail is required
- Platform length (in line with roof deck) and platform width (90 degrees to roof deck) to be specified.
- Walkway grating supplied in 6000mm lengths, to be cut on site to suit.
- Support truss length supplied in 600mm increments to suit 600mm grating width.

Technical data

- Max truss spacing: 700mm
- No top hat load spreader required

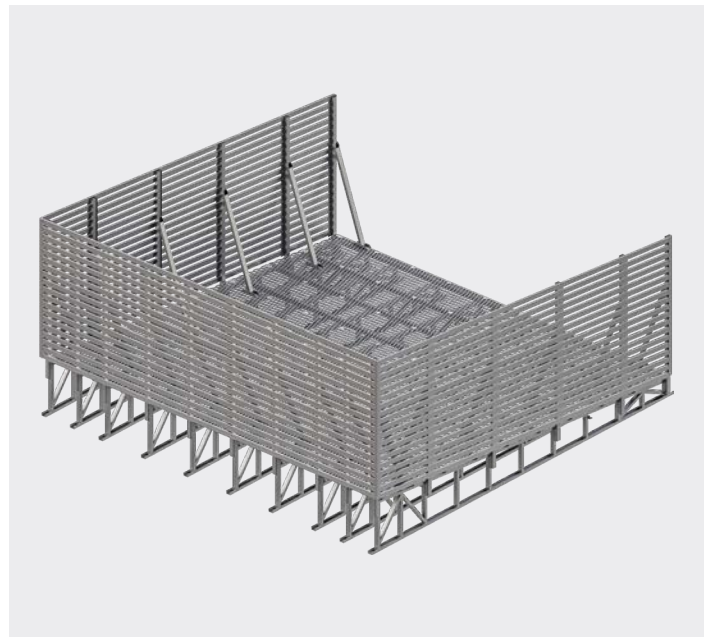


HP50 HVAC platform - 5.0kPa

- Effective use floor space must take into account screen bracing positioned 500mm from edge of platform.
- Screens available in 1200mm, 1500mm, 1800mm and 2400mm height variations.
- Standard screen colours include: mill finish, shale grey, monument and woodland grey.
- Screen slats provided in 6200mm lengths to be cut to suit on site.

Technical data

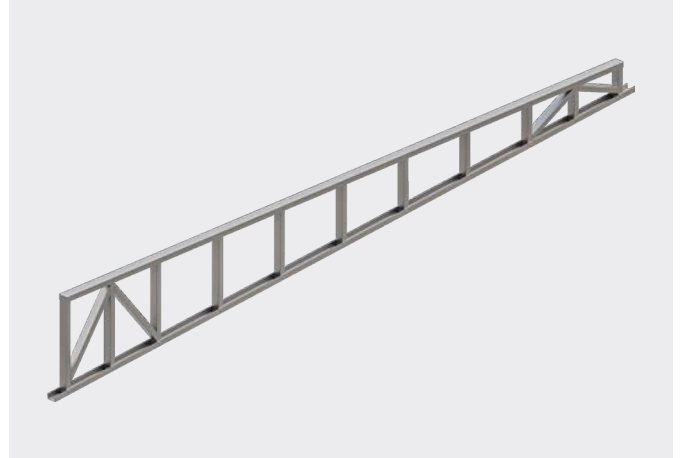
- Max truss spacing: 700mm max (up to 1000mm - single bay)
- Top hat load spreader required at 700mm spacing.



HVAC PLATFORM COMPONENTS

Platform truss

- An aluminum web design to support the platform deck.
- The truss is designed to mount to the roof crest, ensuring no obstruction to the water flow. Trusses are manufactured at 5000mm max length. Any truss longer than 5000mm will be fabricated in two sections.
- Trusses to be spaced 700mm depending on load requirements.



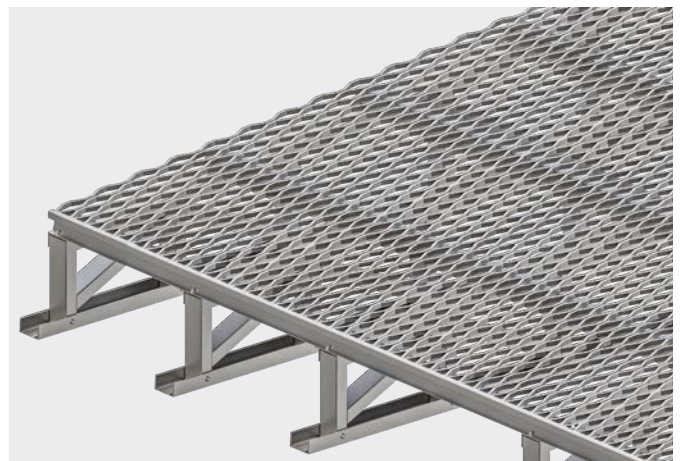
Top hat load spreader

- The aluminum high strength top hat design is attached to the top of the platform truss for maximum load distribution and a simple walkway grating deck attachment.
- The top hat section to be spaced at 700mm intervals.
- The top hat section enables truss spacing to increase to 1000mm when spanning a skylight or roof penetrations.



Walkway platform deck

- Aluminium 13mm expanded, high grip mesh is attached to top hat load spread beam, providing a versatile surface to which machinery can be attached.
- Walkway may deflect up to 7mm with 110kg point loads.
- Greater point loads may require closer spaced top hat section.



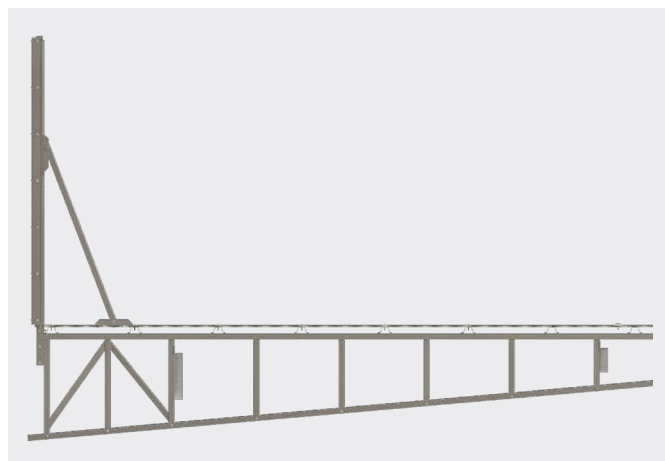
Platform slatted screen

- Designed as a modern, unobtrusive screen system to minimise the visual impact of roof mounted machinery.
- It is supplied in a range of standard colours including:
 - Mill finish
 - Shale Grey
 - Monument Grey
 - Woodland Grey
- Slat dimensions are 65 x 16mm, allowing a spacing of 32mm in between slats.



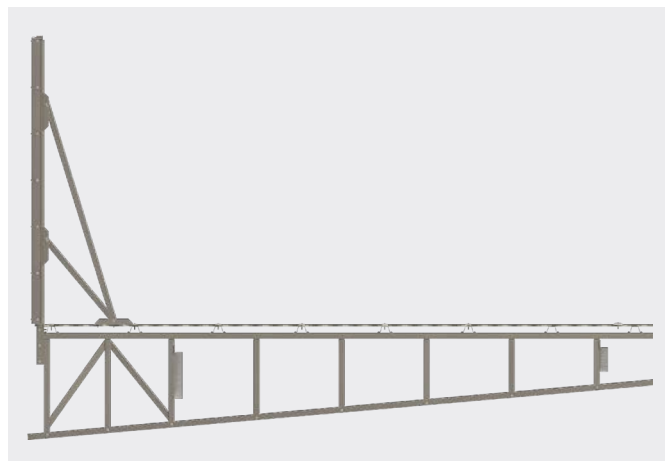
Single screen brace - wind region A*

- Designed to support screens up to 2400mm in height, depending on wind classification.
- When calculating usable platform area, care must be taken to allow for brace footprint approximately 500mm.
- Screens up to 1200mm do not require bracing.



Double screen brace - wind region B and C*

- Designed to support screens up to 2000mm in height, depending on wind classification.
- When calculating usable platform area, care must be taken to allow for brace footprint approximately 500mm.
- *Note: Wind region C requires an in-house engineering check.



* Install location wind classification must be confirmed by a building certifier or engineer

TECHNICAL STATEMENT

Criteria	Data	Note
Max roof pitch	30 degrees (Max truss height 1200mm)	Greater angles/heights require bespoke design. Platform heights over 300mm require guardrail.
Max platform length	No maximum length. Expansion joints may apply.	Length is measured in line with roof sheets. Note: Maximum 1200mm height of platform at high end, without further engineering.
Max platform width	No maximum width.	Width measured across roof sheet direction.
Platform truss	Max length: 5.0m (Longer than 5.0m manufactured in sections for ease of handling)	Welded aluminium grade 6106 – T6. The truss is tek screwed to the bottom cord.
Platform truss spacing	2.5 kPa : (Truss only) 700mm max 5.0 kPa: (Truss and top hat) 700mm STD - Up to 1000mm single bay span.	5kPa platform must include top hat load spread beams at 700mm spacings.
2.5kPa load rated platform	Truss spacing 700mm max.	No top hat load spreader required. Existing structure design and engineering must be checked by others.
5.0kPa load rated platform	2.5 kPa : (Truss only) 700mm max 5.0 kPa: (Truss and top hat) 700mm STD - Up to 1000mm single bay span.	Top hat load spreader is required at 700mm spacings or 500mm if deflection less than 7mm is required. Existing structure design and engineering must be checked by others.
Maximum point load	110kg. (Greater point load may require a spreader beam.)	For higher point loads, load spread profile must be used or closer batten spacing of 500mm if deflection less than 7mm is required.
Platform guardrail	1.0m guardrail height above platform deck. 2.0m guardrail post spacing	No guardrail needed where platform deck is less than 300mm above roof crest.
Platform screen criteria	1200mm, 1500mm, 1800mm, 2000mm or 2400mm high	1200mm – no screen brace required. Bracing requirement depends on wind classification.
Screen slats dimension and spacing	Slats size: 65 x 16mm Slat spacing : 32mm gap	Slat length supplied at 6.5m – To be cut on site.
Screen slats standard colours	Shale Grey, Monument Grey and Woodland Grey	Other standard colorbond colours are available but require special order.
Aluminium walkway deck	13mm x 600mm x 6000mm Maximum span: 700mm	Walkway to be cut on site to suite application.
Wind loading criteria	Certified for wind regions A, B and C. - V500 = 45m/s – Region A – Tc 2.5 - V500 = 57m/s – Region B – Tc 2.5 - V500 = 66m/s – Region C – Tc 2.5	Wind classification must be confirmed by a building certifier or engineer. Region C requires Kattsafe engineering check.
Structure height	25 metres (From ground to platform level)	Structure higher than 25m will require additional Kattsafe engineering.
Importance level	3	Must be confirmed by building surveyor.
Terrain category	2.5	Represents the type of terrain surrounding the area.
Design life	25 years	Represents the type of terrain surrounding the area. Platform system is design for 25 years.

TECHNICAL SPECIFICATION

HVAC platforms

HVAC platform system installed on metal roof decking or other surfaces. Crest fixed to ensure no water flow restriction. System design, supply, layout, installation and certification by a Kattsafe approved installer, as per the manufacturer's installation instructions and current standards.

Materials

- Walkway: Mill finish, expanded aluminium grating
- Platform truss: Hi-tensile mill finish profiled aluminium support system, grade 6106-T6
- Slats: Mill finish 65 x 16 RHS (can be coloured)

Dimensions

- Walkway grating length: 3000mm/6000mm
- Walkway grating width: 600mm
- Walkway grating thickness: 13mm
- Platform: to suit site requirements

Weight

- Platform: 10kg/m² (approx)
- Guardrail: 3kg/m (approx)
- Slats (2000mm high): 14kg/m (approx)

Fixings (refer to installation manual)

- Walkway to batten: 12-14 x 35 stainless self drill screw.
- Top hat to truss: 2 x 29mm tek screws
- Truss to roof deck: 8mm construction grade bulb type rivet
- EPDM seal / dissimilar metal barrier.

Edge protection

- Guardrail: 1000mm high
- Slatted screen system: Max 2400mm high with bracing (see note in engineering regarding wind loads)
- Bracing required for screens over 1200mm
- Dual bracing required for screens over 2000mm in wind category B and C

Compliance

- The platform and slatted system complies with AS/NZS 1170.0:2002, AS/NZS 1170.1:2002, AS/NZS 1170.2:2021, AS/NZS 1664.1.
- The walkway system is designed to comply with Australian Standard AS 1657:2018 and relevant statutory WHS codes of practice/guidelines.
- Please note, every system that has slatted screens must have the engineering design verified before ordering/production. We require the address, wind region, category, height of building for verification.

Wind loads and structure design

Design load is to wind region terrain category A, B and C. All details and information must be provided to Kattsafe if different to current design categories. Existing structure to be designed and checked by others.

Product warranty

10 years from date of purchase subject to correct installation. Use and maintenance to be in accordance with manufacturer's specifications and recommendations.

Inspection and maintenance

Visual inspection for any damage or loose fixings must be done periodically and prior to use. Basic wear and tear preventative maintenance is recommended, as per manufacturer's specifications and recommendations, every 3 years.

Important note

Failure to supply and/or install proprietary product in accordance with above standards and codes, specifications and instructions voids complete system certification and/or warranty.

WARRANTY INFORMATION

Warranty period on this system:
10 years from date of purchase

Should you have a warranty claim as a result of a defect the following procedure must be followed:

Identify the following information:

- The product/system name and code number.
- The date of purchase/installation.
- Installation company details.
- The installation identification number.
- The name of the company using this system.
- A description of the defect/warranty claim.
- The periodic system maintenance report.

Forward the above information to sales@kattsafe.com.au or contact technical helpline, 1300 301 755.

Painted surfaces

Refer to the painted surfaces warranty document on kattsafe.com.au for powder coating specifications and warranty.

Terms and conditions

All warranty claims must be made in writing within 14 days of the appearance of the defect.

Incorrect installation or work done by a non accredited Kattsafe system installer will void all warranty rights.

Systems that have been installed using non proprietary equipment will void all warranties.

System installation, roof/cladding and concrete penetration seals are not covered in this warranty.

Systems/components that have not been maintained in accordance with manufacturer's/legislative requirements will void warranty.

Systems used by incompetent persons or use with non compatible accessories ie. harness gear, lanyards, travellers, fall arrestors etc. will void warranty.

Systems/components used for purposes other than their intended use will void warranty.

General wear and tear is expected and will depend on the frequency of use and is not covered by warranty.



Product brochure
HVAC platforms



Installation manual
HVAC platforms



QMS Certification
ISO 9001:2015

Find all related products and resources on our website.
kattsafe.com.au

Kattsafe

Height access
and fall protection

1029 Mountain Highway
Boronia Victoria 3155
Australia

1300 301 755
sales@kattsafe.com.au
kattsafe.com.au